



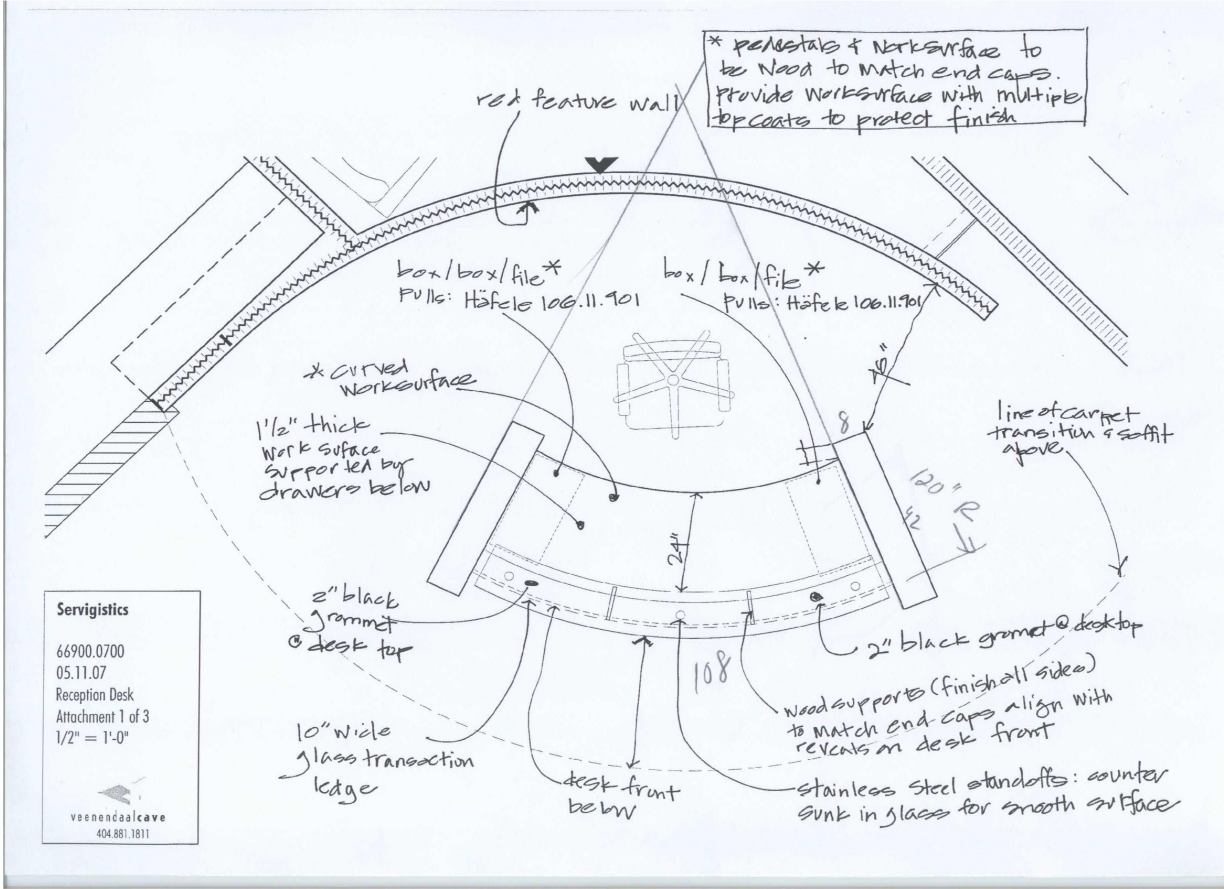
Arnold Reception Desks, Inc

In 2006, ARD introduced the Arcus Series reception desk at the NeoCon East trade show in Baltimore.

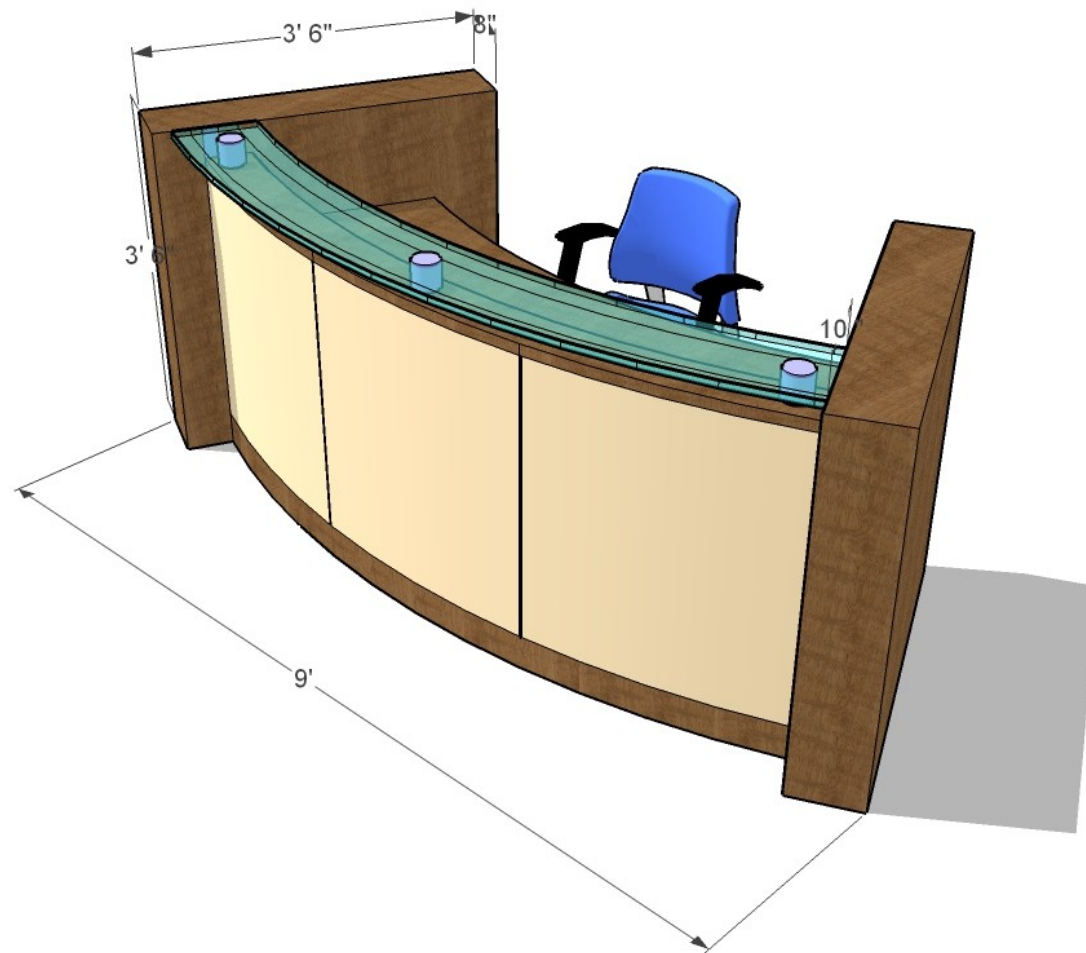


The Arcus features a unique concave footprint, clear glass counter on metal stand-offs, recessed metal laminate toe kick, and optional lights and leather panels.

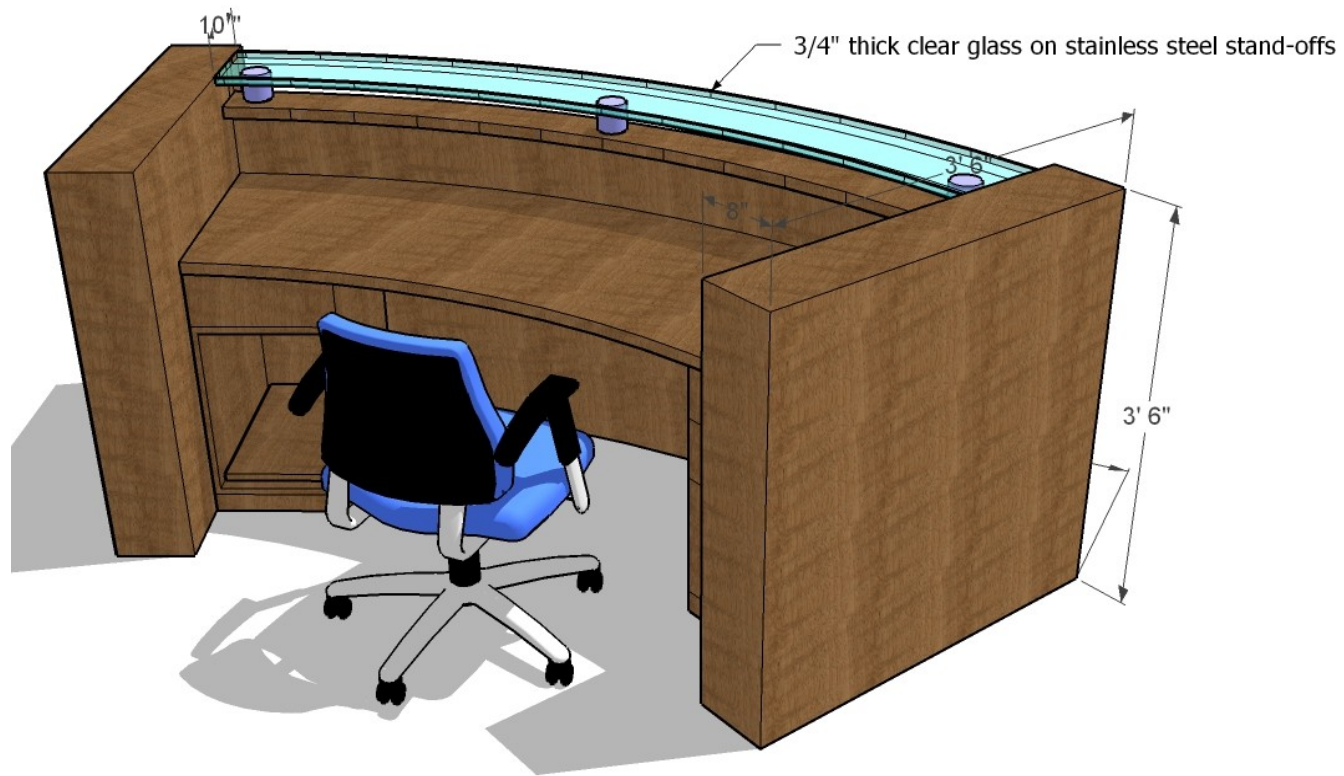
The specifications they sent were relatively complete, compared to many of the projects that we do, but we still had to adapt the specs to our customary methods and materials.



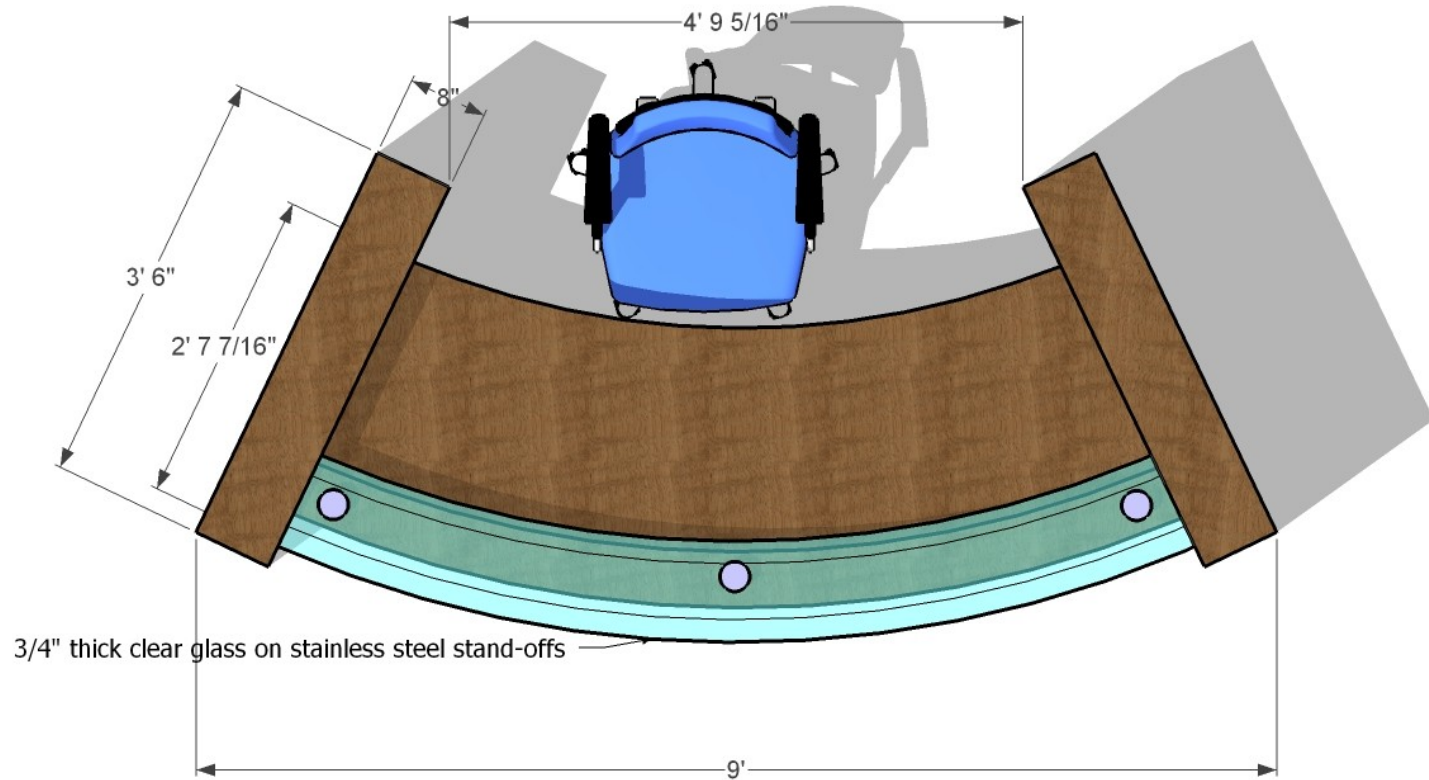
With the drawings from VenedaalCave as the starting point, our design department worked up a set of renderings for review by the designer and enduser.





ARD uses Sketchup Professional for its renderings. This program permits the rapid creation of true 3-d images. Compared to orthogonal CAD type drawings, Sketchup drawings allow the enduser to envision with some degree of certitude the eventual look of the reception desk.



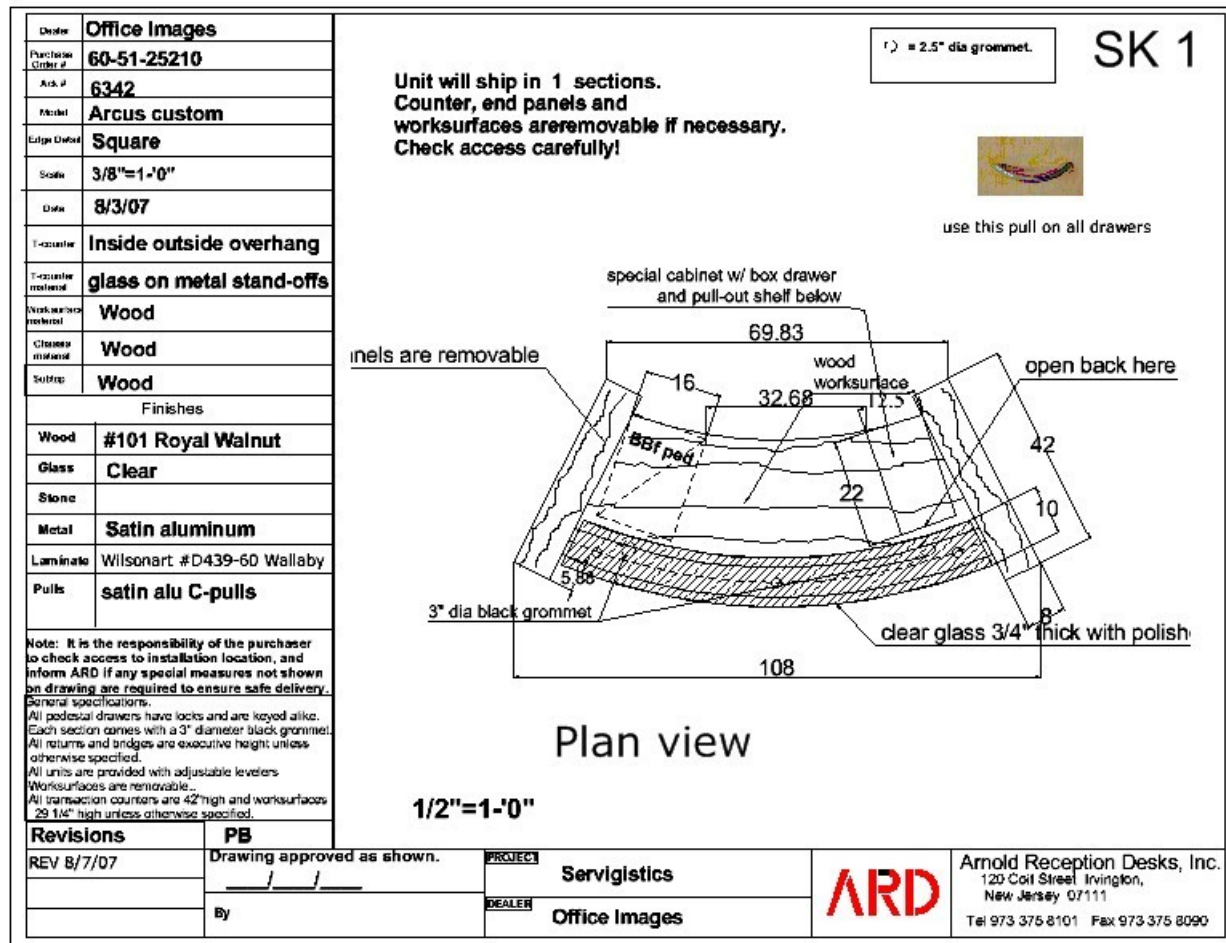
These images can be exported as 3-D files to AutoCad. The actual wood, laminate, metal and glass finishes can be applied to the various surfaces, to give a lifelike appearance to the rendering.



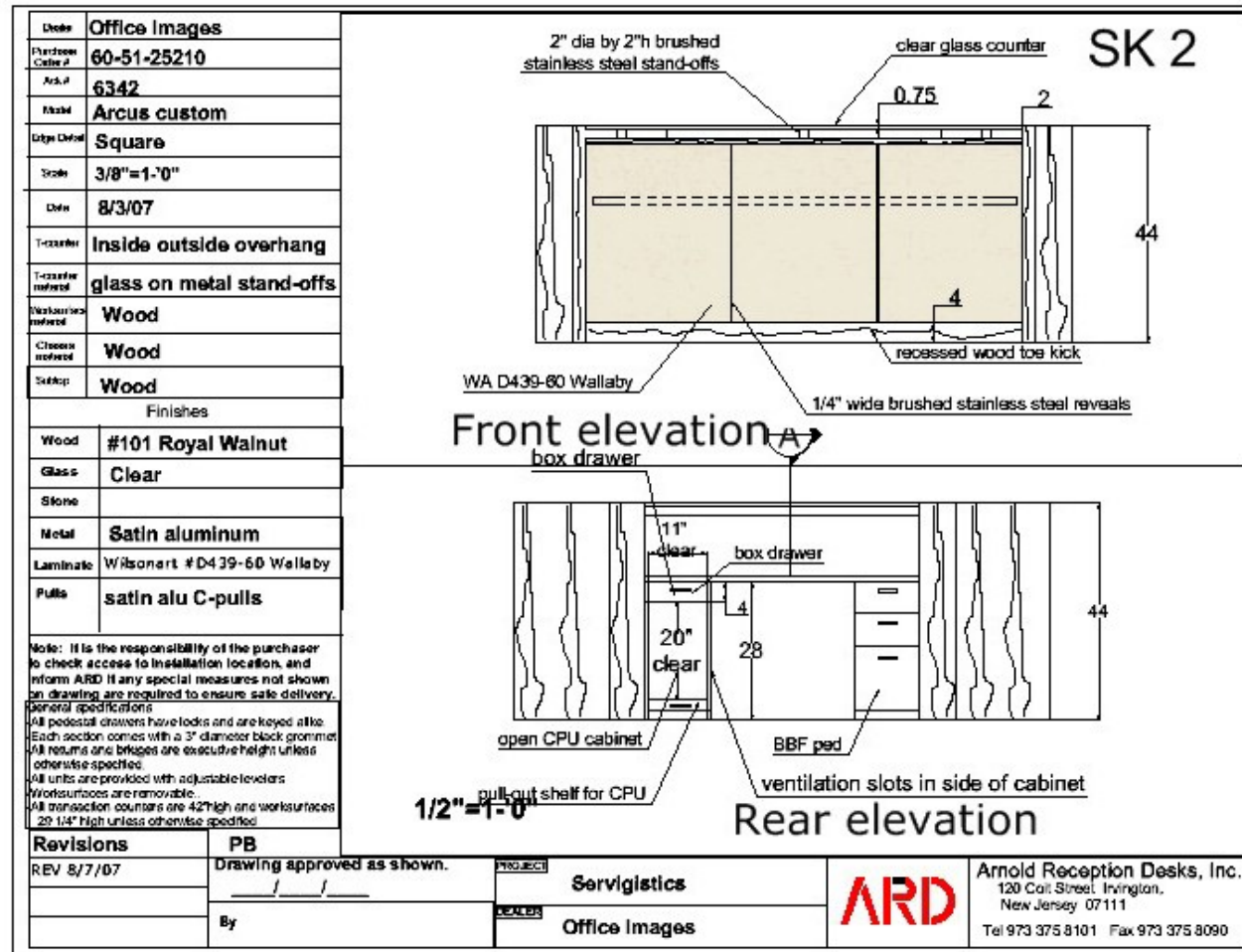
The final leg of the quoting process is the quote itself. On the quote we give a verbal description of the unit, itemize the optional features and components, and show lead time, finish, and shipping information.

 Arnold Reception Desk 120 Coit Street Irvington New Jersey 07111 Tel 800 306 0076 Fax 973 375 8090 E-mail: Peter@ardesk.com		Quote No. RD7943			
date 5/14/2007 Contact Leigh Ann Ballard Company Name Office Images Fax number Phone Number Email lballard@officeimagesinc.com Project Servigistics					
GSA contract # GS-28F-0024K					
Baseline model		Description of the unit to be quoted			
Quantity	1	Reception desk based on your drawings. ARD reserves the right to build unit using its customary methods and materials. Price includes 3/4" thick clear glass counter on 1.5" dia x 2" h SS stand-offs, Wood subtop, wood worksurface and end panels, 2 peds, 1 grommet, ARPA 0201 Dream Ghibli finish on front, with SS reveals between. Wood finish to match sample on std ARD wood.			
Style	Arcus				
Model#	custom				
Edge detail	Square				
T-counter	Inside/outside overhang				
		Baseline Unit List Price for standard model	\$27450.00	Extension	\$27450.00
(-) indicates deduct	Options	Baseline list price above , price modifiers below	Unit list price	Extension	
	RPED21				
	RPED02				
	Mobile BBF				
	RFL02				
	RDC02				
	RDC04				
	020				
	031				
	Option #1				
	Option #2	Price includes dock delivery to GA			
	Option #3				
	Option #4				
	Option #5				
	Option #6				
Lead time*	8 weeks	Shipping information		Total List price.	\$27450.00
Finish	Finish to match	Prices shown here include dock delivery to Zone 1	Non union straight time inside set up is available in some areas : In this area it	Add 5% to match sample. Prices shown here are valid for 90 days, unless otherwise specified. 50% deposit required for custom desks. * There will be a 15% upcharge for all Anigre finishes.	
Freight	Best way				
Deposit	50% deposit				
Finish Color	To be decided				
* From approval of shop drawing.		Extra discount available for pick-up from factory (5% of the net price)			

Following the inevitable tweaking process, the final design has been approved, a dealer is selected, and a purchase order is sent. The next step is the submittal of shop drawings.



ARD typically submits shop drawings as pdf files, showing plan view, elevations, sections and details. The shop drawings call out all relevant dimensions, finishes, storage, etc. The drawings can be submitted in a dwg format as well allowing inclusion in ACAD drawings.



PROJECT

Servigistics

DEALER

Office Images

Arnold Reception Desks, Inc.
 120 Coll Street, Irvington,
 New Jersey 07111
 Tel 973 375 8101 Fax 973 375 8090

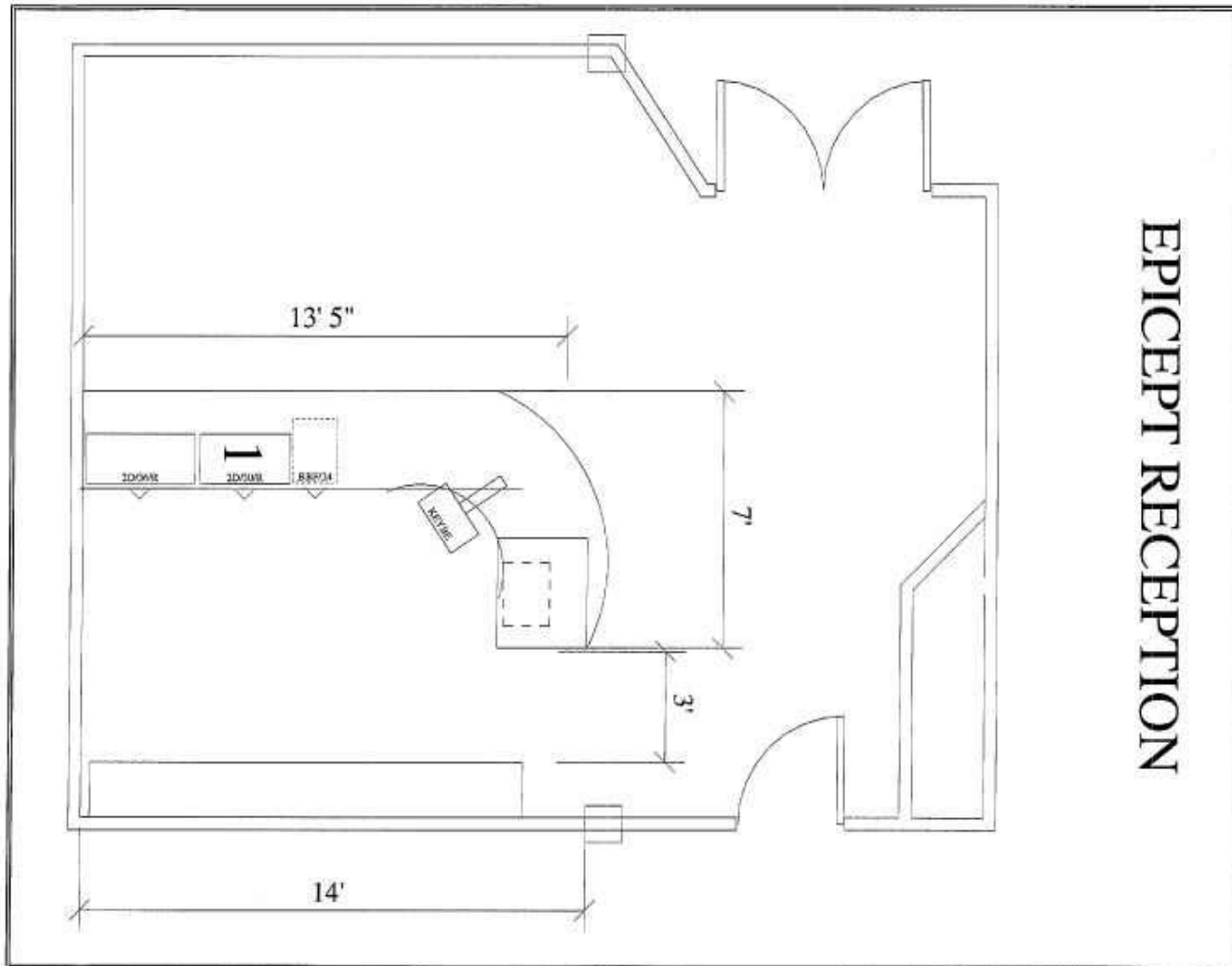
The photos below were taken at the factory, prior to shipping. We have posted them on our website, www.ardesk.com, in the “custom” section, as an illustration of the ability of ARD to adapt any of our styles to special architectural requirements. We find that the custom section of the website serves as a reservoir of design ideas.



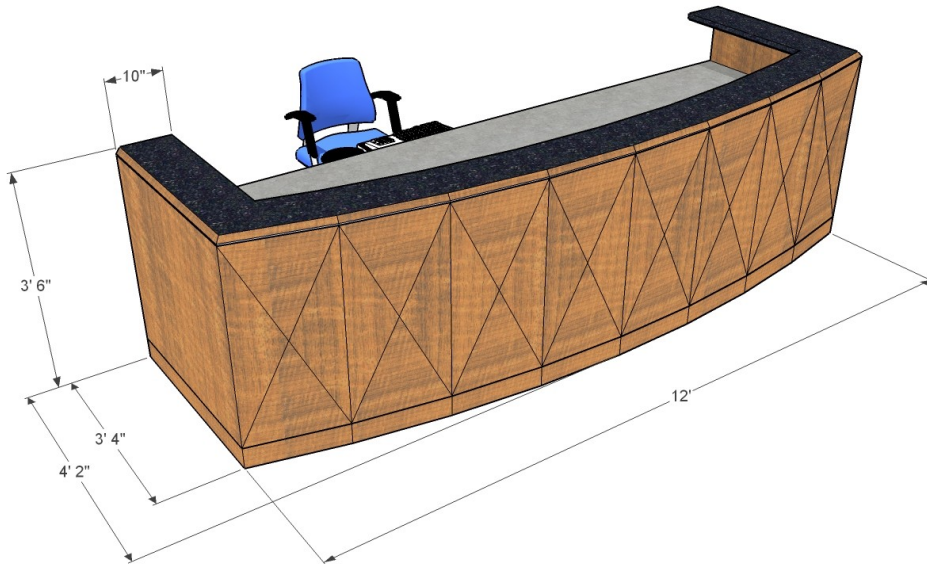
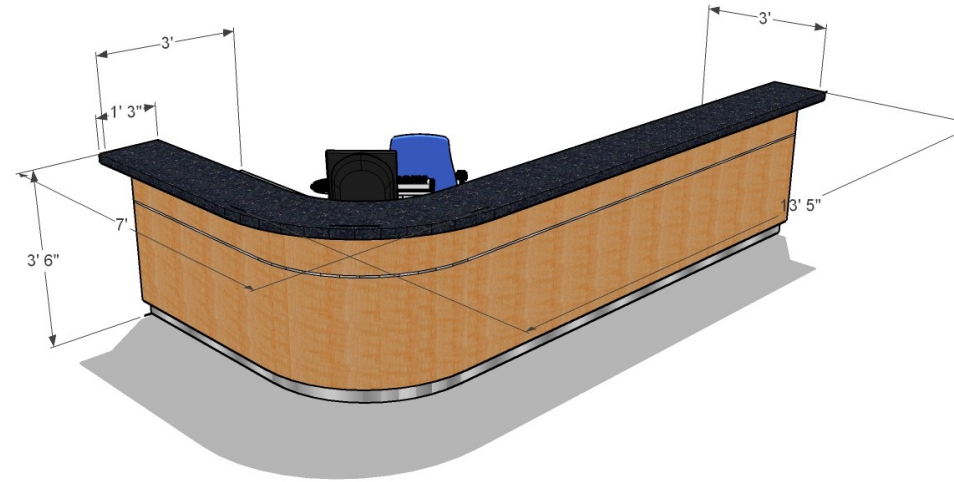
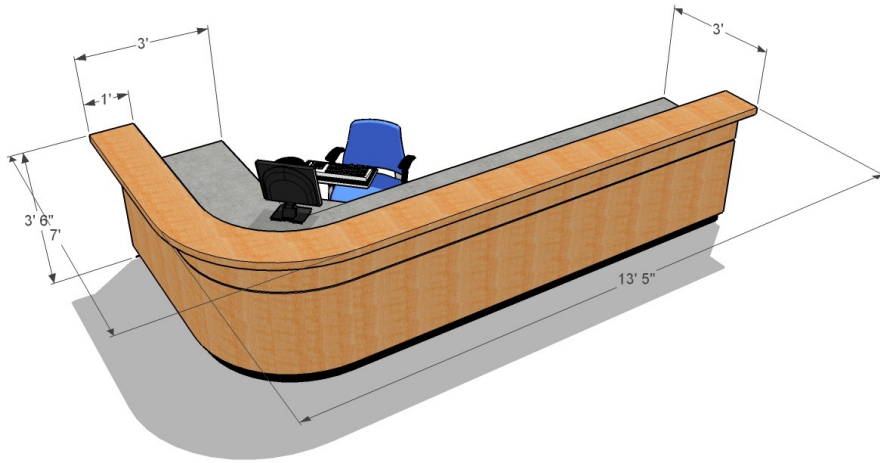
In this case, the vision of the designer was quite clear, and little imagination was required to get it right.



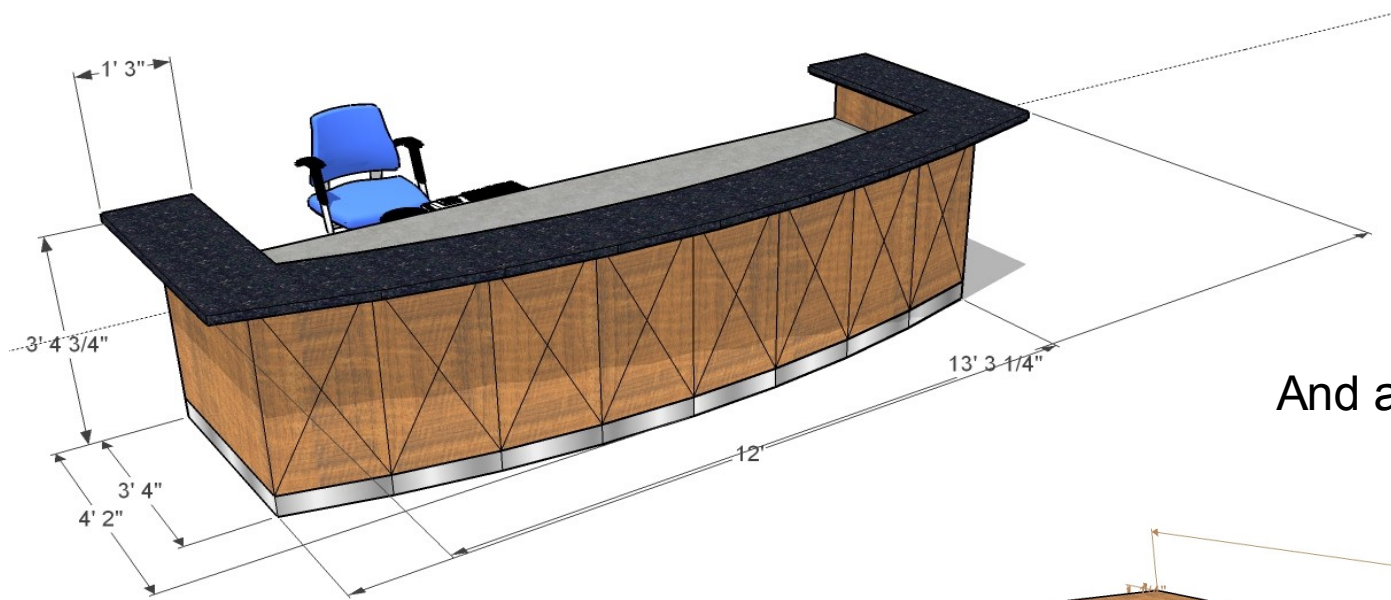
In many cases, the specifier is not sure what is needed, and ARD is able to provide to the enduser some detailed images that can help to define the project. We received the minimal plan view below, for a desk and credenza for Tarrytown NY.



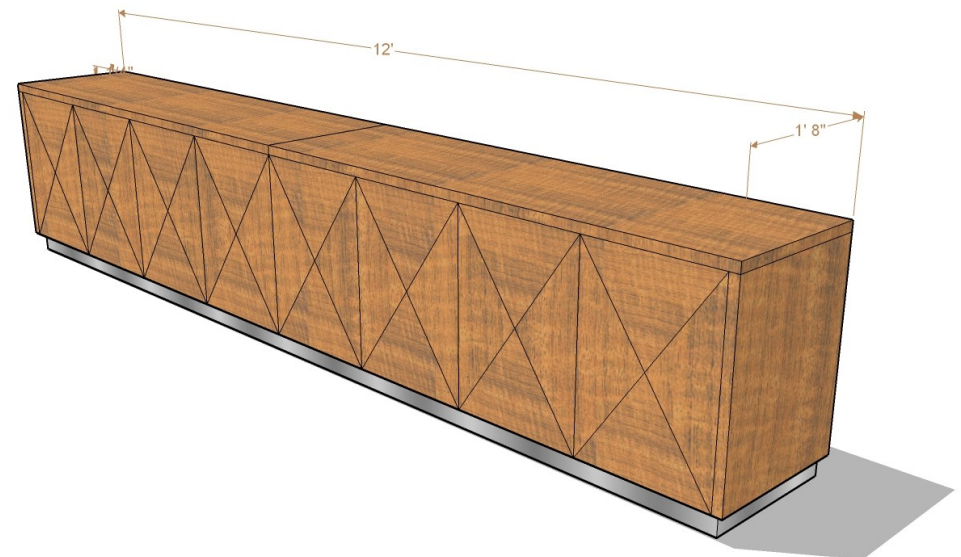
A number of layouts were submitted and priced out



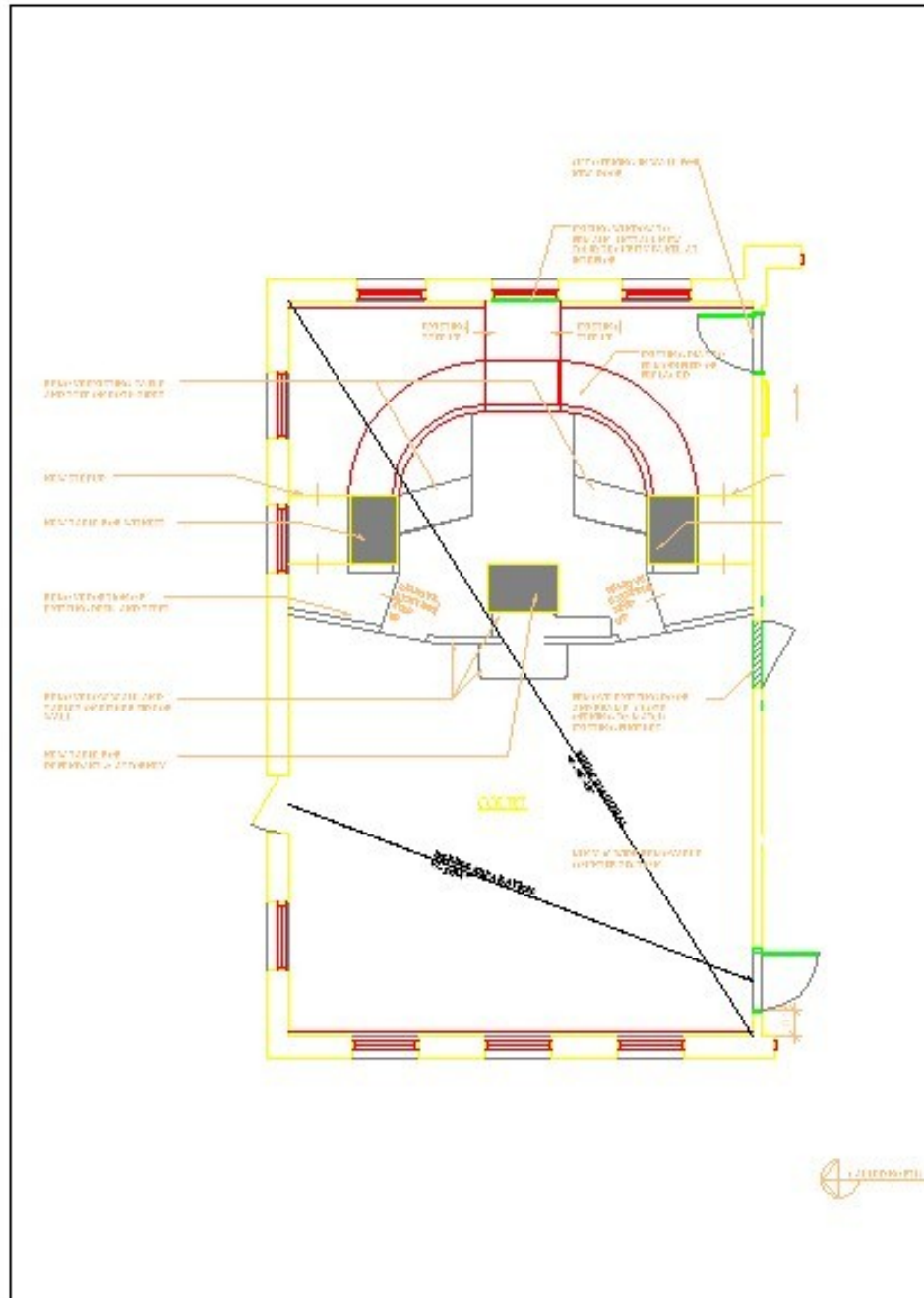
Until finally the enduser found a design that was perfect for the space.



And a credenza to match.



On the other end of the spectrum are projects that are well defined from the beginning but require some visual backup to seal the deal. In the case of a local township council chamber, ARD was able to work with an AutoCad drawing from an architect. This drawing was imported into Sketchup to provide the basis for the concept drawing

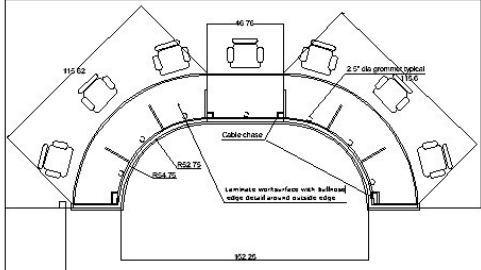


ARD provided several concept drawings to the township, and after the typical process of modification and adaptation, became a purchase order.



Shop drawings are submitted for approval to the township.

Date: Goode Products	
Purchase Order #: Verona 21498	
A.S. #: 6440	
Model: Custom	
Edge Detail: Bullnose	
Scale: 3/8"=1'-0"	
Date: 10/23/07	
Finish: Wood	
Work surface material: HPL TBD	
Clearance material: Wood	
Settop:	
Finishes	
Wood: TBD	
Glass:	
Stone:	
Metal:	
Laminate: TBD	
Pulls:	



Plan View

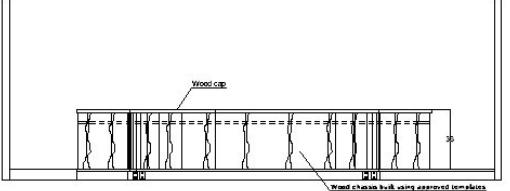
Scale: 1/4" = 1'-0"

Note: It is the responsibility of the purchaser to check access to installation location, and inform ARD if any special measures not shown on drawing are required to ensure safe delivery. General specifications: All pedestal drawers have locks and are keyed alike. Each section carries with a 3" diameter black granite. All returns and bridges are executive height unless otherwise specified. All units are provided with adjustable levers. Worksurfaces are removable. All transaction counters are 42" high and worksurfaces 28 1/4" high unless otherwise specified.

Revisions	PB
Drawing approved as shown.	
By: _____	PROJECT: Verona NJ Municipal Court
By: _____	DEALER: Good Products
	ARD
	Arnold Reception Desks, Inc. 120 Coit Street Irvington, New Jersey 07111 Tel: 973 375 8101 Fax: 973 375 8090

SK 2

Date: Goode Products	
Purchase Order #: Verona 21498	
A.S. #: 6440	
Model: Custom	
Edge Detail: Bullnose	
Scale: 3/8"=1'-0"	
Date: 10/23/07	
Finish: Wood	
Work surface material: HPL TBD	
Clearance material: Wood	
Settop:	
Finishes	
Wood: TBD	
Glass:	
Stone:	
Metal:	
Laminate: TBD	
Pulls:	



Front Elevation

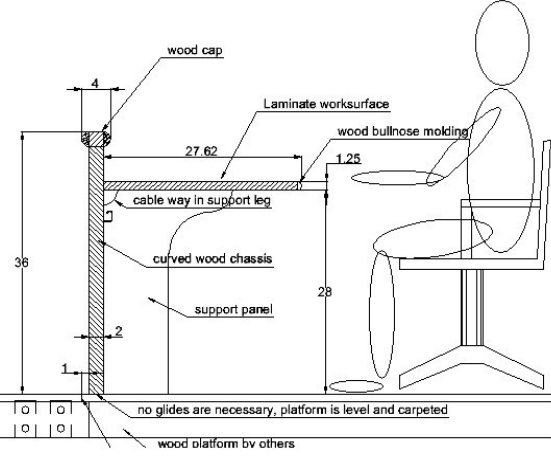
Scale: 1/4" = 1'-0"

Note: It is the responsibility of the purchaser to check access to installation location, and inform ARD if any special measures not shown on drawing are required to ensure safe delivery. General specifications: All pedestal drawers have locks and are keyed alike. Each section carries with a 3" diameter black granite. All returns and bridges are executive height unless otherwise specified. All units are provided with adjustable levers. Worksurfaces are removable. All transaction counters are 42" high and worksurfaces 28 1/4" high unless otherwise specified.

Revisions	PB
Drawing approved as shown.	
By: _____	PROJECT: Verona NJ Municipal Court
By: _____	DEALER: Good Products
	ARD
	Arnold Reception Desks, Inc. 120 Coit Street Irvington, New Jersey 07111 Tel: 973 375 8101 Fax: 973 375 8090

SK 3

Date: Goode Products	
Purchase Order #: Verona 21498	
A.S. #: 6440	
Model: Custom	
Edge Detail: Bullnose	
Scale: 3/8"=1'-0"	
Date: 10/23/07	
Finish: Wood	
Work surface material: HPL TBD	
Clearance material: Wood	
Settop:	
Finishes	
Wood: TBD	
Glass:	
Stone:	
Metal:	
Laminate: TBD	
Pulls:	



Side View

Note: It is the responsibility of the purchaser to check access to installation location, and inform ARD if any special measures not shown on drawing are required to ensure safe delivery. General specifications: All pedestal drawers have locks and are keyed alike. Each section carries with a 3" diameter black granite. All returns and bridges are executive height unless otherwise specified. All units are provided with adjustable levers. Worksurfaces are removable. All transaction counters are 42" high and worksurfaces 28 1/4" high unless otherwise specified.

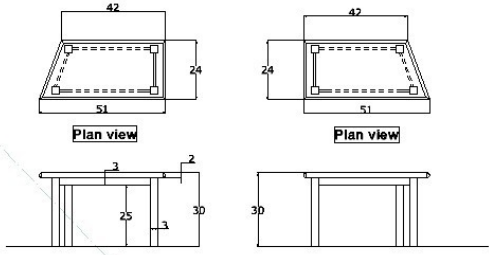
Revisions	PB
Drawing approved as shown.	
By: _____	PROJECT: Verona NJ Municipal Court
By: _____	DEALER: Good Products
	ARD
	Arnold Reception Desks, Inc. 120 Coit Street Irvington, New Jersey 07111 Tel: 973 375 8101 Fax: 973 375 8090

SK 4

Date: Goode Products	
Purchase Order #: Verona 21498	
A.S. #: 6440	
Model: Custom	
Edge Detail: Bullnose	
Scale: 3/8"=1'-0"	
Date: 10/23/07	
Finish: Wood	
Work surface material: HPL TBD	
Clearance material: Wood	
Settop:	
Finishes	
Wood: TBD	
Glass:	
Stone:	
Metal:	
Laminate: TBD	
Pulls:	

Table finish schedule.

Wood legs
Wood bullnose edge on top
Laminate top



Plan view **Plan view**

Front Elevation **Front Elevation**

Q = 1 Side tables Q = 1

Note: It is the responsibility of the purchaser to check access to installation location, and inform ARD if any special measures not shown on drawing are required to ensure safe delivery. General specifications: All pedestal drawers have locks and are keyed alike. Each section carries with a 3" diameter black granite. All returns and bridges are executive height unless otherwise specified. All units are provided with adjustable levers. Worksurfaces are removable. All transaction counters are 42" high and worksurfaces 28 1/4" high unless otherwise specified.

Revisions	PB
Drawing approved as shown.	
By: _____	PROJECT: Verona NJ Municipal Court
By: _____	DEALER: Good Products
	ARD
	Arnold Reception Desks, Inc. 120 Coit Street Irvington, New Jersey 07111 Tel: 973 375 8101 Fax: 973 375 8090

Initial field measurements were taken of the platform built by the GC, templates were made and taken to site for verification.



Six weeks later the finished product was delivered and installed.

